

Saturn[®]

ST-OH0425

OIL RADIATOR



GB

OIL RADIATOR

Dear Buyer!
We congratulate you on having bought the device under trade name "Saturn". We are sure that our devices will become essential and reliable assistance in your housekeeping.

Avoid extreme temperature changes. Rapid temperature change (e.g. when the unit is moved from freezing temperature to a warm room) may cause condensation inside the unit and a malfunction when it is switched on. In this case leave the unit at room temperature for at least 1.5 hours before switching it on.

If the unit has been in transit, leave it indoors for at least 1.5 hours before starting operation.

DO NOT TURN HEATER UPSIDE-DOWN DURING OPERATION.

PARTS DESCRIPTION



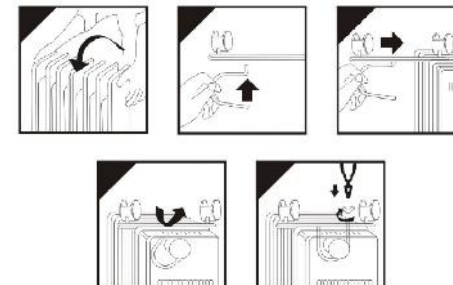
1. Power switch
2. Thermostat knob
3. Handle
4. Oil filled fins
5. Castors
6. Cord storage
7. Power cord with plug

ASSEMBLY

Remove the heater and all the accessories from the carton.

1. Turn the heater upside down.

2. Position the wheel base assemblies between the end fins.
3. Attach them to the heater using the U-bolts and wing nuts supplied.
4. Tighten the wing nuts.
5. Turn the heater the right way up.



IMPORTANT SAFEGUARDS

1. Read the instructions carefully before use and save them for future reference.
2. Always disconnect the heater from the main supply when not in use and when cleaning.
3. Do not leave the heater "ON" unattended.
4. Never cover the heater as this may lead to risk of fire.
5. Keep the heater a distance of at least 90 cm from any combustible material, such as furniture, curtains, bedding cloths or papers.
6. Keep the heater clean. Do not allow objects to enter the ventilation, as this may cause electric shock, fire or damage the heater.
7. Close supervision is required when any appliance is used near or by children.
8. Never allow the cord to touch wet or hot surfaces, become twisted or be within the reach of children.
9. Do not use outdoors.
10. Do not place on or near a hot gas or electric burner.
11. Never use the appliance with a damaged cord or plug or after the appliance has malfunctioned or been damaged in any way.
12. Never attempt to open any part or dismantle the controls. Responsibility for failure cannot be accepted if these instructions have been ignored.
13. Do not use the appliance for anything other than its intended use.
14. This appliance is intended for household use only.
15. Regulations concerning the disposal of the oil when scraping the appliance have to be followed.

16. Any repairs that need to be done to the heater must be referred to an authorized service agent only.
 17. The appliance is not intended for use by young children or infirm persons without supervision.
 18. Young children should be supervised to ensure that they do not play with the appliance.
 19. If the supply cord is damaged, it must be replaced by the manufacturer or its service agent in order to avoid a hazard.
 20. The heater must not be located immediately below a socket-outlet.
 21. Do not use this heater in the immediate surroundings of a bath, a shower or a swimming pool.
 22. This heater is filled with a precise quantity of special oil. Repairs requiring opening of the oil container are only to be made by the manufacturer of his service agent who should be contacted if there is an oil leakage. Regulations concerning the disposal of the oil when scrapping the appliance have to be followed.
 23. The appliance is not intended for use by persons (including children) with reduced physical, sensory or mental capabilities, or lack of experience and knowledge, unless they have been given supervision or instruction concerning use of the appliance by a person responsible for their safety.
 Service life – 5 years.

OPERATING THE OIL RADIATOR
 Place the heater on the floor at least 90 cm away from the wall and any other objects such as furniture, curtains or plants.

(Make sure the power supply used corresponds to the one on the rating label)

With the thermostat control switch and the power setting switches in the '0' position, plug the heater into the main power supply.

1. Room temperature can be adjusted using the thermostat simply. Turn the thermostat knob clockwise, to increase the heat, and anti-clockwise to decrease the temperature, until you reach the desired temperature.

2. Switch the heater to one of the following power settings.

- a) Push switch one (I) 600W
- b) Push switch two (II) 900W
- c) Push switches one and two heat settings together.

3. The power switch lights up when activated.

4. Turning the thermostat control clockwise will increase the "set" temperature.
 5. Turning the thermostat anti-clockwise will decrease the "set" temperature.
 6. Do not cover the heater at any time during operation. There is a risk of fire if the heater is covered.
 7. Once you have finished using your heater, turn the power switches, and the thermostat control switch to the "0" positions, and unplug from the mains supply.

CLEANING THE OIL RADIATOR

1. Always disconnect the heater from the mains supply before cleaning.
2. Clean the outside of the heater by wiping with a damp cloth and buff with a dry cloth.
3. Do not use waxes or polishes as these may react with the heater and cause discoloration.

STORING THE OIL RADIATOR

1. Save the box for off season storage.
2. Clean the heater following the cleaning instructions above.
3. Remove the wheel base assemblies.
4. Place the heater, and wheel assemblies in the original box, and store in a cool and dry place.
5. If you choose to store your heater fully assembled be sure to cover it to protect it from dust.

SPECIFICATIONS

Power: 1500 W
 Rated voltage: 220-240 V
 Rated frequency: 50 Hz
 Rated current: 6.8 A
 7 fins
 Heating area: up to 17 m²
 3 power settings: 600/900/1500W

SET	
OIL RADIATOR	1
INSTRUCTION MANUAL WITH	
WARRANTY BOOK	1
PACKAGE	1

ENVIRONMENT FRIENDLY DISPOSAL

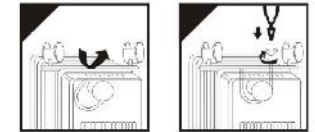
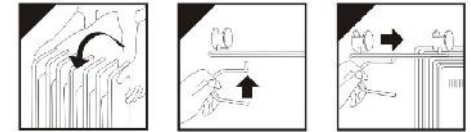


You can help protect the environment! Please remember to respect the local regulations: hand in the non-working electrical equipment to an appropriate waste disposal center.

The manufacturer reserves the right to change the specification and design of goods.

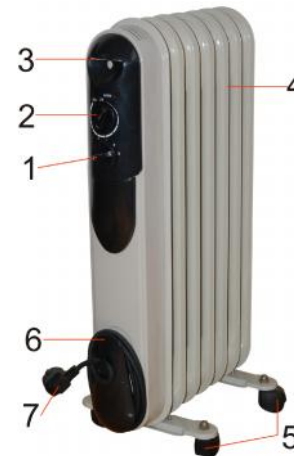
RU

"Saturn".



1,5

1,5



- 1.
- 2.
- 3.
- 4.
- 5.
- 1.
- 2.
- 3.
- 4.
- 5.
- 6.
- 7.
- 8.
- 9.

U-

90

10.
11.
12.
13.
14.
15.
16.
17.
18.
19.
20.
21.
22.
23.

(
)
«0».
1.
2.
a)
b)
c)
3.
4.
5.
6.
7.
"0"
1.
2.
3.
4.
5.

(I) 600
(II) 900

1500
: 220-240
50
6,8
17²
: 600/900/1500

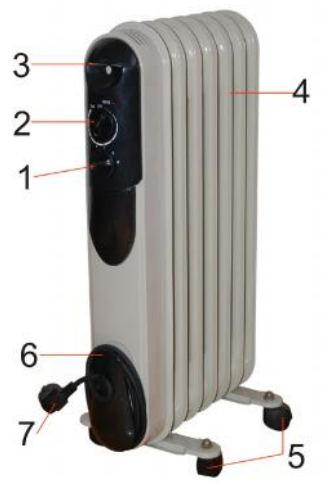


U

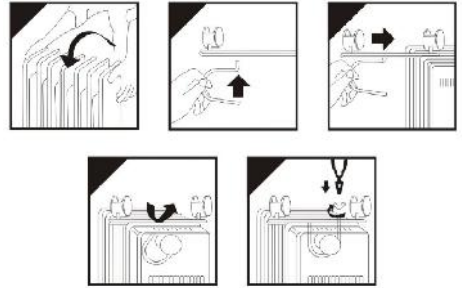
"Saturn".

1,5

1,5



1.
2.
3.
4.
5.
6.
7.



1.
2.
3.
4.
5.

U-

- 5

90

- 1.
- 2.
- 3.
- 4.
- 5.
- 6.
- 7.
- 8.
- 9.
- 10.
- 11.
- 12.
- 13.
- 14.
- 15.
- 16.
- 17.
- 18.
- 19.
- 20.

90

- 21.
- 22.
- 23.
- 90
- (
-)
- 5
- 90
- (
-)
- «0».
- 1.
- 2.
- a) 600
- b) 900
- c)
- 3.
- 4.
- 5.
- 6.
- 7.
- "0"

- 1.
- 2.
- 3.
- 1.
- 2.
- 3.
- 4.
- 5.
- 7
- 3
- 1500
- 220-240
- 50
- 6,8
- 17²
- 600/900/1500
- 1
- 1
- 1



Saturn®

INTERNATIONAL MANUFACTURER'S WARRANTY

MEZINÁRODNÍ ZÁRUKA

GB

INTERNATIONAL MANUFACTURER'S WARRANTY

The Warranty is provided for the period of 2 years or more if the Law on User Right of the country where the appliance was bought provides for a greater minimum warranty period.

All terms of warranty comply with to the Law on Protection of the Consumer Rights and are governed by the legislation of the country where the product was bought. The warranty and free of charge repair are provided in any country where the product is delivered to by Saturn Home Appliances or authorized representative thereof, and where no restriction of import or other legal provisions interfere with rendering of warranty services and free of charge repair.

Cases uncovered by the warranty and free of charge repair:

1. Guarantee coupon is filled in improperly.
2. The product has become inoperable because of the Buyer's nonobservance of the service regulations indicated in the instruction.
3. The product was used for professional, commercial or industrial purposes (except for the models, specially intended for this purpose that is indicated in the instruction).
4. The product has external mechanical damage or damage caused by penetration of the liquid inside, dust, insects and other foreign objects.
5. The product has damages caused by non-observance of the rules of power supply from batteries, mains or accumulators.
6. The product was exposed to opening, repair or modification of design by the persons, unauthorized to repair; independent cleaning of internal mechanisms etc. was made.
7. The product has natural wear of parts with limited service life, expendables etc.
8. The product has deposits of scale inside or outside of fire-bar elements, irrespective of used water quality.
9. The product has damages caused by effect of high (low) temperatures or fire on non-heat resistant parts of the product.
10. The product has damages of accessories and nozzles which are included into the complete set of product shipment (filters, grids, bags, flasks, cups, covers, knives, sealing rings, graters, disks, plates, tubes, hoses, brushes, and also power cords, headphone cords etc.).
11. A defect was a result of inappropriate installing of the appliance by non-specialists of the supplier's authorized service center.

On the warranty service and repair, please contact the authorized service centers of "Saturn Home Appliances".

MEZI NÁRODNÍ ZÁRUKA

Záruka se poskytuje na dobu 2 roky.V p ípad že Zákon na ochranu spot ebitele dané zem na izuje delší dobu, prodlužuje se záruka na tuto dobu.

Veškeré záru ní podmínky odpovídají Zákonu o ochran práv uživatel a jsou ízené zákonodárstvím státu, kde byl výrobek koupen. Záruka a bezplatná oprava se poskytují v každém stát ,kam jsou výrobky dodané společností „Saturn Home Appliances“ nebo jejím zplnomocn ným zástupcem a kde nejsou žádná omezení na dovoz nebo jiné právní p edpisy omezující poskytnutí záru ního servisu a bezplatné opravy.

P ípady,na které se záruka a bezplatná oprava nevztahují

1. Záru ní list je vypln n nesprávn .
2. Výrobek byl poškozen kv li tomu, že zákazník nesplnil pravidla použití, která jsou uvedena v návodu.
3. Výrobek byl používán k profesionálním, komer ním nebo pr myslovým cíl m (krom model speciáln ur ených pro tyto cíle, což je uvedeno v návodu).
4. Výrobek má vn jší mechanická poškození nebo poškození, vyvolaná tím, že se dovnit dostala tekutina, prach, hmyz a jiné cizí p edm ty.
5. Výrobek má poškození, která jsou vyvolaná nespln ním pravidel napájení od baterií, síť nebo akumulátor .
6. Výrobek rozebírali, opravovali nebo m nili jeho konstrukci lidé, kte í nebyli zplnomocn ni k oprav , bylo provedeno samostatné íšt ní vnit ních mechanism a pod.
7. Výrobek má p írozené opot ebov ání díl s omezenou dobou použití, spot ebních materiál atd.
8. Výrobek má vrstvu usazeniny uvnit nebo zvenku termoelektrických oh íva , bez ohledu na kvalitu používané vody.
9. Výrobek má poškození, která jsou vyvolaná p sobením vysokých (nízkých) teplot nebo ohn na termonestabilní ásti výrobku.
10. Výrobek má poškozené p íslušenství a nástavce, které jsou dodané spolu s výrobkem (filtry, sí ky, sá ky, ba ky, mísy, víka, nože, šleha e, struhadla, kotou e, talí e, trubky, hadice, kartá e a také sí ové š ry, sluchátkové š ry atd.).
11. Vada je d sledkem nesprávné instalace výrobku neoprávn nou osobou.

V otázkách záru ního servisu a oprav se obračejte na autorizovaná servisní st ediska společnosti „Saturn Home Appliances“ .

«Saturn Home Appliances»

- 1.
- 2.
- 3.
4. ().
- 5.
- 6.
- 7.
- 8.
9. ()
10. ()
11. ().

« Saturn Home Appliances» .

: <http://saturn.ua/ru/servis>,
: 0-800 505-27-09

					LCD		
, 4	« »	8(988) 993-37-78	+		+	+	+
, 18		8(8553) 32-22-11 8(960) 047-22-11	+	+	+	+	+
, 109	-	8(86152) 2-81-99	+	+	+	+	+
12, 1, 1,	« -29»	8(8182) 44-15-55	+				
, 47	« »	8(8512) 25-19-39 8(8512) 25-12-00	+	+	+		
, 54	« »	8(8512)50-19-97	+		+		
, 77, 16, 2	« »	8(8512)54-67-67 8(8512)54-91-91				+	+
, 15	« »	8(85141) 3-61-25	+	+	+	+	+
, 8	« »	8(927) 565-11-56	+	+	+	+	+
, 32		8(927) 552-47-21 8(937) 122-13-99				+	+
, 4	« - »	8(39151) 5-90-94 8(983) 158-21-94	+			+	+
, 113	« »	8(3852) 63-94-02	+		+	+	+
, 114	« »	8(3852) 20-25-52 8(3852) 69-60-09			+		+
, 9, 25		8(905) 425-604-73	+	+	+		
, 37		8(8635) 47-47-72 8(8635) 47-47-72	+	+	+	+	+
, 79, 2	« - »	8(980) 521-76-16	+				
, 63	« »	8(86155) 3-11-00 8(918) 980-64-75	+	+	+	+	+
, 63	«Radmond»	8(4162) 21-00-88 8(4162) 54-01-23	+				
, 36	« »	8(4832) 68-71-75	+	+	+	+	+
, 3	« »	8(4832) 63-06-00 8(4832) 33-15-61			+		
, 18	« »	8(3535) 23-23-98 8(922) 802-21-58	+	+	+	+	+

, 84		8(86559) 2-08-02 8(86559) 5-29-71	+	+	+	+	+
, 1		8(928) 92-00-497 8(86559) 2-07-17					+
, 136/4	-ise	8(964) 013-00-59	+	+	+	+	+
, 39	« »	8(4922) 44-72-80 8(4922) 44-72-81	+	+	+	+	+
, 173	« »	8(8442) 97-50-10 8(960) 883-59-00			+		
, 4		8(8442) 98-16-47 8(8442) 53-06-04	+	+	+	+	+
, 11	« - »	8(8442) 37-16-74 8(8442) 37-69-03			+		
	« »	8(961) 688-53-48			+		
		8(927) 521-52-00			+		+
, 9		8(937) 722-68-12				+	+
, 32		8(937) 730-66-03			+		+
, 158		8(904) 404-14-55				+	+
12/15	«Master»	8(928) 126-63-66	+		+		
, 110	«X »	8(961) 41-001-71 8(918) 500-54-99	+	+	+	+	+
, 1	« »	8(8172) 52-72-51	+		+		
, 46	« »	8(473) 260-09-08 8(473) 240-57-73	+		+	+	
, 12-15	« »	8(920) 436-08-52 8(960) 131-17-99			+		
, 13	« »	8(38822) 6-23-32	+		+	+	+
, 48	« »	8-962-655-20-00	+	+	+	+	+
, 308		8-962-753-67-67	+				
, 17	« »	8(8712) 22-49-21 8(928) 001-33-03	+	+	+	+	+
, 68	« »	8(8313) 21-14-14	+		+		
, 54	« »	8(8313) 20-56-00	+	+	+	+	+

63	« »	8(84235) 2-86-59 8(84235) 9-14-64	+		+	+	+	
84	« »	8(86132) 2-11-71 8(86132) 3-66-02	+	+	+	+	+	
55	« »	8(86132)5-05-00	+	+		+	+	
81, 3	« »	8(343) 361-11-77 8(343) 361-11-78	+		+	+	+	
64	« »	8(343) 240-26-60	+		+			
201, 7	«GOLD»	8(919) 372-28-04			+			+
31, 2	« - »	8(343) 385-12-89	+	+	+	+	+	
47	« »	8(47467) 4-12-08 8(47467) 4-33-17	+		+			
22		8(86359) 4-32-23 8(86359) 4-06-42			+			
45/6	« - »	8(4932) 335185 8(4932) 335236	+	+	+	+	+	
« » 7 (« »)	« 26»	8(86545) 2-74-74			+			
4	« - »	8(3412) 30-79-79 8(3412) 30-83-07	+		+	+	+	
76	« - »	8(3412) 78-76-85 8(3412) 78-06-64	+		+	+	+	
301, 307, 7/1	« - »	8(3412) 44-60-40 8(3412) 44-60-67			+			
24	« »	8(8362) 24-11-24 8(8362) 25-55-40	+	+	+	+	+	
24	« »	8(3952) 42-55-76 8(3952) 78-15-83	+		+	+		
56	« »	8(3952) 28-74-50 8(3952) 76-71-75			+		+	+
183	« - »	8(34551) 7-46-31						+
9	«VIP-SERVIS»	8(843) 258-92-15	+		+	+		
100, 45	« »	8(843) 240-64-94	+	+	+	+	+	
163	«1000»	8(4012) 58-83-54 8(4012) 76-04-77	+		+			
33	-	8(3439) 39-95-20 8(34399) 34-74-40	+	+	+	+	+	

6	« »	8(84457) 9-17-43 8(84457) 9-45-89	+	+	+	+	+	
157		8(8734) 44-42-44	+	+		+	+	
53/2	-	8(3842) 35-39-67	+			+		
17	« »	8(87239) 2-33-55 8(87239) 3-01-77	+	+	+	+	+	
42	« - »	8(8332) 56-25-95 8(8332) 54-70-77	+		+	+		
96	« »	8(86393) 2-10-43			+			
9	-	8(988) 548-24-36	+		+			
2		8(86142) 4-43-59	+	+	+	+	+	
1	« »	8(918) 936-36-53			+		+	+
3	« - »	8(861) 267-50-88	+	+	+	+	+	
103, 55	« - - »	8(861) 222-64-13 8(861) 222-85-55 8(905) 408-08-38	+	+	+	+	+	
16		8(861) 235-49-68	+	+	+	+	+	
1\1	« - »	8(918) 102-00-10 8(961) 501-92-22	+	+	+	+	+	
106	« »	8(86156) 3-40-40 8(918) 990-35-04	+		+	+		
116		8(86164) 7-01-22			+			
57	« »	8(86145) 3-78-74			+			+
25	« »	8(86164) 65-4-95 8(918) 355-81-70	+	+		+	+	
1		8(86153) 4-16-70			+			
242, 1		8(86 151) 4-10-92	+	+	+	+	+	
6	« »	8(3912) 92-92-22 8(3912) 41-78-88	+	+	+	+	+	
1	« »	8(3912) 93-54-33 8(3912) 94-52-82	+	+	+	+	+	

36- 37-	« + »	8(4712) 50-85-90 8(4712) 35-04-91	+	+	+	+		
5	« »	8(4712) 51-45-75	+	+	+	+	+	
17	« »	8(4712) 54-74-24	+	+	+	+	+	
2	« »	8(86169) 7-39-99 8(86169) 7-24-96	+	+	+	+	+	
66	« »	8(4742) 33-45-65 8(4742) 33-45-95	+	+	+	+	+	
25	« - »	8(8772) 55-62-38		+				+
164	« »	8(8722) 93-30-73	+	+	+	+	+	
14- 21	« -ise »	8(8722) 63-23-94 8(8722) 93-55-15	+	+	+	+	+	
11	« »	8(86385) 2-33-26 8(960) 458-07-11	+	+			+	+
9	«X »	8(909) 401-35-21	+	+	+	+	+	
3 ()	« »	8(495) 721-30-70 8(499) 168-05-19 8(499) 168-47-15	+		+	+	+	
20 (30/05)	« »	8(8552) 359002 8(8522) 359042	+	+	+	+	+	
154 (52/28)	«VIP-SERVIS»	8(8552) 99-91-45	+	+	+	+	+	
24	« - »	8(8662) 42-04-30 8(8662) 42-12-21	+		+	+		
55	« »	8(86554) 5-59-77 8(86554) 3-67-57	+	+	+	+	+	
10	« - »	8(34783) 3-43-44	+	+	+	+	+	
9 (« »)	« »	8(8555) 48-08-80 8(917) 906-60-06	+		+	+	+	
51	« - »	8 (831) 220-84-94 8 (831) 413-82-91	+		+			
18	« - »	8(831) 46-18-848		+				+
6		8(831) 46-18-848		+				+
18	« »	8(3843) 20-31-33	+		+	+	+	

21/27	« »	8(48762) 6-46-46	+	+	+	+	+	
14	« - »	8(8617) 63-11-15 8(8617) 63-03-95	+		+	+		
17	« - »	8(383)274-99-33 8(383) 274-99-45	+		+			
63, 3	« »	8(383) 210-59-49 8(383) 210-52-92	+		+	+		
2	« »	8(383) 351-39-19	+		+			
24	« »	8(86369) 3-74-75 8(928) 609-35-85	+	+	+			
4		8(3532) 36-87-94	+			+	+	
5- 1	« - »	8(3812) 577-092 8(3812) 576-329	+		+			
194	« - »	8(3812) 36-74-01						+
130	« »	8(3812) 36-42-02	+	+	+	+	+	
25	« - + »	8(3537) 37-23-83	+	+	+	+	+	
11	« - »	8(3537) 35-79-93 8(3537) 20-60-70	+	+	+	+	+	
11-	« - »	8(3537) 35-79-93 8(987) 796-00-19	+	+	+	+	+	
3,	« - »	8(342) 221-40-99	+	+	+	+	+	
19, 1	« - »	8(342) 240-88-88 8(342) 205-57-88	+	+	+	+	+	
11	« »	8(342) 240-93-35 8(342) 240-93-24		+				
11	« - »	8(8142) 78-06-93 8(8142) 70-65-48	+		+			
39-5		8(3846) 69-33-00	+	+	+	+	+	
11	« »	8 (8112)-53-86-30 8 (8112)-53-86-50	+		+			+
5- 13		8(8793) 98-70-11 8-918-743-69-46	+	+	+	+	+	
50-		8(47396) 48-911	+	+	+	+	+	
18		8(47396) 47-676	+	+	+	+	+	
1	« - »	8(863) 250-47-77	+		+			
37	« »	8(863) 250-47-77	+		+			
7	« - »	8(863) 227-60-90 8(863) 299-00-50	+	+	+	+	+	

55	« »	8(863) 21-92-112 8(800) 100-51-52	+	+	+	+	+
/17-	« »	8(906) 453-35-81	+		+		
14	« »	8(86370) 2-19-50	+	+	+	+	+
12	« »	8(4855) 22-04-77 8(4855) 25-38-60	+	+	+	+	+
21	« »	8(4855) 24-31-21	+	+	+	+	+
14, .1	« - »	8(4912) 76-88-01 8(4912) 40-30-30	+	+	+	+	+
42-	« - »	8(4912) 41-33-02	+	+	+	+	+
100/ 56	« - »	8(846) 990-37-51 8(846) 240-98-17	+	+	+	+	+
149	« - - »	(846) 979-9-979	+	+	+	+	+
e 197	« XXI»	8(812) 600-11-97	+	+	+	+	
e 41-	« - »	8(812) 325-36-56 8(812) 325-36-57	+		+	+	
e 11, 36-	« -95»	8(812) 822-18-00 8(812) 320-06-61	+				
1	« - »	8(8342) 23-05-91 8(8342) 47-48-59	+	+	+		
95	« - »	8(8452) 52-81-21 8(8452) 52-83-84	+	+	+	+	+
253-	« »	8(496) 547-04-95 8(496) 549-32-79	+	+		+	+
47	« -S»	8(963) 624-49-46			+	+	+
44	« »	8(4812) 45-05-13 8(920) 333-09-44	+	+	+	+	+
90	« »	8(8622) 55-51-19 8(8622) 55-01-08	+			+	+
63	« »	8(8652) 24-30-14 8(8652) 23-31-81	+	+	+	+	+
15-, .21	« »	8(8652) 95-53-68 8(8652) 95-61-90		+			
3/4	« »	8(8652) 44-88-66		+			

1	« - »	8(4725) 24-62-27 8(4725) 24-73-49	+	+	+		
158	« - »	8(3473) 20-12-13 8(3473) 20-27-70	+		+	+	+
25	« »	8(8212) 22-95-29 8(8212) 29-12-20	+	+	+	+	+
137-	« -2000»	8(4752) 56-19-42 8(4752) 56-19-44	+	+	+	+	+
18	« »	8(4822) 47-65-65 8(4822) 47-58-58	+	+	+	+	+
24/2		8(86130) 4-86-59 8(918)147-02-03	+	+		+	+
2/2	« - »	8(86196) 7-20-53	+	+	+	+	+
48	« +»	8(8482) 22-72-41 8(8482) 22-71-85 8(8482) 61-65-64	+	+	+	+	+
115	« »	8(910) 949-68-44 8(953) 182-61-82	+	+	+	+	+
169/5	« »	8(3452) 75-95-08 8(3452) 20-82-65	+		+	+	
24	« »	8(9292) 69-56-60; 60-56-60-	+	+	+	+	+
55	« »	8(3452) 47-35-69	+		+	+	+
28	« »	8(3012) 21-89-63	+		+	+	+
16/7	« »	8(8422) 73-44-22 8(8422) 73-29-19	+	+		+	+
6/1	« - »	8(347) 236-57-07	+		+		
59	« - »	(347) 2281701	+		+	+	+
153; 42	« »	8(347) 279-90-70 8(347) 241-62-02					+
70-	« -ise»	8(928) 048-93-10	+	+	+	+	+
15-	« »	8(86391) 2-18-06	+		+		
36	« »	8(8352) 62-30-97 8(4942) 63-20-98	+		+		
8		8(351) 239-39-34 8(351) 239-39-35	+	+	+	+	+
57, .3	« »	8(351) 225-13-13 8(351) 236-12-40	+		+	+	+

340-	« - »	8(8782) 27-30-60 8(8782) 27-70-77	+	+	+	+	+
48, . 11	« . . »	8(8782) 25-04-66 8(8782) 25-19-15	+	+	+	+	+
, 13	« - »	8(8782) 23-91-26 8(928) 385-22-42	+	+	+	+	+
, 33	« »	8(3022) 36-39-36 8(3022) 36-39-32	+	+	+	+	+
, 1		8(904) 345-83-18	+	+	+	+	+
3- , 21-	« »	8(84722) 9-52-07 8(937) 469-52-07	+	+	+	+	+
, 57	« - »	8(8453) 55-80-89 8(964) 848-45-06	+		+	+	+
, 12	« - »	8(4852) 25-94-83	+		+		

UA

- 1.
- 2.
- 3.
- 4.
- 5.
- 6.
- 7.
- 8.
- 9.
- 10.
- 11.

«Saturn Home Appliances»

2

« Saturn Home Appliances» .

: <http://saturn.ua>,

0-800 502-502

	Hi-Fi ()	(06442) 9-11-37 (099) 052-10-01	+	+	+	+	+	-	+	
	-	(04563) 6-84-13	+	+	+	+	+	-	+	
	« - »	(04143) 4-06-36	+	+	+	-	+	+	+	
	« »	(03141) 4-34-32	+	+	+	+	-	-	-	
		(0432) 69-95-73	+	+	+	+	+	+	+	
		(0432) 64-24-57 (0432) 64-26-22	-	+	+	-	-	-	-	
		(0432) 50-91-91 (0432) 57-91-91 (066) 350-91-91 (096) 050-91-91	+	+	+	+	+	-	+	
	« - »	(0432) 46-43-93 (0432) 46-82-13 (0432) 51-92-54	+	+	+	+	+	+	+	
		(0562) 35-04-09 (0562) 34-67-05	+	+	+	+	+	-	+	
	-	(056) 735-63-28 (056) 735-63-25	+	+	+	+	+	-	+	
		(056) 790-04-60	+	+	+	+	+	-	+	
	C ()	(0412) 47-07-42	-	-	+	+	+	-	-	
	(« »)	(0412) 47-15-68 (067) 411-58-12	+	+	+	-	-	-	+	
		(0412) 482425, 067-4102198	+	+	+	+	+	+	+	
		(061) 787-50-51 (0612) 63-97-90	+	+	+	+	+	+	+	
		(0612) 12-03-03	+	+	+	+	-	-	+	
		(0342) 75-60-40 (0342) 71 28 13	+	+	+	+	+	-	-	
		(0342) 55-95-25 (0342) 75-07-77	+	+	+	+	-	-	-	
	« - »	(067) 324-82-18	+	+	+	+	+	+	+	

	« »	(04597) 5-73-93	+	+	+	-	-	-	-	
	« - »	(067) 324-84-01 (067) 324-83-65 (04736) 6-29-49	+	+	+	+	+	+	+	
	« »	(044) 426-91-98 (044) 362 91 98	+	+	-	-	-	-	+	
	« »	(044) 591-11-90	+	+	+	+	+	+	+	
		(0522) 35-79-23 (0522) 27-80-02 (0522) 27-33-00	+	+	+	+	+	-	+	
	()	(0522) 27-28-40 (0522) 27-76-67	+	+	+	+	+	+	+	
		(097) 776-67-70 (097) 264-21-67	+	+	+	+	+	+	+	
	()	(06272) 2-62-23 (06272) 2-21-86 (050) 279-68-16	+	+	+	-	-	-	-	
	« »	(04142) 5-05-04	-	+	+	+	+	+	+	
		(050) 526-06-68	+	+	+	+	+	+	+	
		(06264) 5-93-89	+	+	+	+	-	+	-	
	-	(050) 973-20-14	+	+	+	+	+	-	+	
		(0626) 41-21-34 (067) 255-79-90	+	+	+	+	+	+	+	
		(050) 473-56-12	+	+	+	+	+	+	+	
		(05366) 3-91-92	+	+	+	+	+	+	+	
		(056) 440-07-79	+	+	+	+	+	-	+	
		(050) 214-91-73 (066) 017-02-03	+	+	+	+	+	+	+	
	« »	(0642) 33-02-42 (0642) 33-11-86 (095) 386-89-85	+	+	+	+	+	+	+	
	« - »	(0642) 506000	+	+	+	+	+	+	+	
	« - »	(0332)-290752	+	+	+	-	-	-	+	
	« »	(032) 239-51-52 (032) 239-55-77 (032) 295-50-28 (032) 2955029	+	+	+	+	+	+	+	
		(032) 222-87-10	+	+	+	-	-	+	+	

, 242		(0623) 22-55-50 (066) 103-22-88 (097) 776-81-20	+	+	+	-	-	-	-
, 1		(0623) 41-37-58	+	+	+	+	+	+	+
. 50- 32\18		(0629) 49-60-05 (0629) 49-30-06	+	+	+	+	+	-	+
, 227	(«) »	(0629) 47-30-00 (098) 312-26-28 (095) 028-26-28	+	+	+	+	+	-	+
, 84		(0629) 49-18-81 (067) 597-56-15	+	+	+	+	+	-	+
, 51-		(04337) 6-48-47 (0432) 46-82-13	+	+	+	+	+	+	+
, 46		(03131) 3-73-37 (03131) 3-73-36 (099) 797-44-30 (097) 342-35-51	+	+	+	-	+	+	-
, 33	« »	(0512) 47-04-96 (0512) 47-83-48	+	+	+	+	+	+	+
, 2		(0512) 58-06-47	+	+	+	+	+	+	-
, 49	« »	(0512) 58-21-80 (067) 517-05-70 (066) 705-64-44	-	+	+	+	+	+	-
, 97, 2	« - » ()	(05662) 4-15-03 (099) 074-35-53	+	+	+	+	+	+	+
, 38		(095) 724-72-66	+	+	+	+	+	+	-
, 38	« »	(04141) 5-20-10	+	+	+	+	+	-	+
, 90		(048) 700-17-37 (048) 787-45-79	+	+	+	+	+	+	+
, 55		(0482) 39-06-18 (094) 839-06-19	+	+	+	+	+	-	+
, 2 (, 66)		(048) 731-77-03 (048) 731-77-04	+	+	+	-	-	-	+
, 172-		(05632) 6-15-54 (05632) 6-23-42	+	+	+	+	+	-	+
, 75		(096) 284-08-36 (066) 085-75-39	+	+	+	+	+	+	+
, 29		(0532) 69-42-62 (099) 60-14-24	+	+	+	+	+	+	+
, 120		(0532) 50-98-89 (050) 013-72-17	+	+	+	+	+	-	+
, 66		(0532) 61-56-21	+	+	+	+	+	+	+

, 101/1		(04637) 3-85-95 (095) 886-21-99 (063) 597-41-27 (067) 272-57-51	-	+	+	+	+	+	+
, 12		(0362) 26-65-85	+	+	+	+	+	-	+
, 5		(0362) 43-33-40 (067) 360-42-42	+	+	+	+	+	+	+
, 1		(06434) 2-60-25 (099) 271-01-47	+	+	+	+	+	+	+
, 24		(06452) 5-05-33 (050) 603-72-72	+	+	+	+	+	+	+
, 32		(04733)-46182	+	+	+	+	+	+	+
, 1		(06444) 4-02-89 (066) 105-39-66	+	+	+	+	+	-	+
, 171- \10		(03245)-58381	+	+	+	-	-	-	-
, 19		(096) 340-06-96	+	+	+	+	+	+	+
, 86/1		(0542) 660-300, 650-340, 655-510							
, 2	« »	(067) 357-63-78 (050) 512-48-87	+	+	+	+	+	+	+
, 1/24	« - »	(04744) 4-66-14 (04744) 4-61-34	+	+	+	-	-	-	-
, 3/2		(0312) 65-42-66 (099) 557-53-07	+	+	+	+	+	+	+
, 3	« »	(057) 734-97-24 (057) 712-51-81	+	+	+	+	-	+	-
, 12		(057) 717-13-39 (057) 702-16-20	+	+	+	+	+	+	+
(, 18, , 42)	« »	(096) 595-37-46	+	+	+	-	-	+	+
, 35		(0552) 42-02-35	-	-	-	+	-	-	-
, 28-		(0552) 43-40-40 (050) 494-60-43	+	+	+	+	+	+	+
, 23		(0552) 29-60-42	+	+	+	+	+	+	+
, 7		(0382) 66-45-01 (063) 075-08-89	+	+	+	-	-	+	+
, 2		(0382) 70-47-00 (0382) 70-47-07 (03822) 66-46-16	+	+	+	+	+	-	-
, 18		(0382) 78-37-73 (0382) 78-37-55	+	+	+	+	+	+	+

. , 146, 102	« - »	(0472) 56-34-78 (0472) 50-03-54 (0472) 56-42-16 (096) 505-63-63	+	+	+	+	+	+	+
. , 71	« »	(0472) 31-46-57 (0472) 56-56-21	+	+	+	-	-	-	+
. 77- , 1	« »	(0462)-601585	+	+	+	+	+	-	-
. , 105		(0372) 55-48-69 (050) 434-55-29	+	+	+	-	+	+	+
. , 3		(03840) 4-00-17 (067) 360-16-32	+	+	+	+	+	+	+

GB

WARRANTY COUPON

When purchasing the product,
please require its checking before you;
BE SURE

that the goods sold to you, are functional and complete
and that the warranty coupon is filled in correctly.

This warranty coupon confirms the absence of any defects in the product you purchased and provides for free of charge repair of the product failed through the fault of the manufacturer throughout the period of warranty service and free of charge repair.

Failing the presentation of this coupon, in case of its improper filling in, infringement of factory seals (if any), and also in cases indicated in the warranty obligations, the claims are not accepted, and no warranty service and free of charge repair is made!
The warranty coupon is valid only in the original copy with the stamp of trading organization, signature of the seller, date of sale and signature of the buyer.
Complex home appliances should be installed by supplier's authorized service centers, authorized specialists. In the case of a malfunction of the home appliance because of incorrect installation, the buyer must pay the cost of the visit (call) of the specialist, as well as the cost of fault diagnostics if necessary.

CZ

ZÁRUČNÍ LIST

Při koupi výrobku
žádejte o jeho vyzkoušení ve Vaší přítomnosti,
PĚŠVĎTESE

že Vám prodaný výrobek je dobře fungující a kompletní
a že záruční list je vyplněn správně.

Tento záruční list potvrzuje, že na Vámi koupeném výrobku nejsou žádné vady a zajišťuje bezplatnou opravu nefunkujícího přístroje z viny výrobce, během celé záruční doby.

Bez předložení tohoto listu, při jeho nesprávném vyplnění, porušení plomb výrobce (jsou-li na výrobku) a také v případech, které jsou uvedené v záručním listě, nároky se nepřijímají a záruční oprava se neprovádí!
Záruční list je platný jenom jako originál s razítkem obchodní organizace, podpisem prodávajícího, termínem prodeje a podpisem zákazníka.
Instalace komplexní spotřebiče musí být provedena autorizovaným servisním střediskem, specialistou. V případě poruchy v důsledku nesprávné instalace výrobku, kupující je povinen uhradit náklady na výjezd (volání) odborný, pokud je to nezbytné, a náklady na diagnostiku poruch.

RU

Saturn®

WARRANTY COUPON

ZÁRUČNÍ LIST

SATURN HOME APPLIANCES S.R.O. KONVOVA 141, 13083
PRAHA 3 – ŽIŽKOV, ČESKÁ REPUBLIKA, TEL: + 4202/ 67 108 392

Model/



Serial number/Sériové číslo/

/



Date of sell/Termín prodeje/

/



Shop stamp/Razítko obchodu/

/



Seller's signature/Podpis prodávatele/

/



Buyer's Signature confirming the acquaintance and consent with terms of free of charge maintenance service of the product, and absence of the complaints on appearance and color of the product. Podpis zákazníka, potvrzující seznámení a souhlas s podmínkami bezplatného záručního servisu výrobku, a také neexistence nároků na vzhled a barvu výrobku.



UA

ВІДМІТКИ ПРО ВСТАНОВЛЕННЯ ВИРОБУ*

Дата встановлення	Назва організації, СЦ	№ наряду	ПІБ та підпис майстра
			ПІБ та підпис споживача**

*Побутові прилади, для введення в експлуатацію котрих необхідні установочні, монтажні роботи, повинні вводиться в експлуатацію уповноваженими спеціалістами сервісних центрів постачальника. В разі виникнення несправності виробу з причини некоректної установки вироб може бути знятий з гарантійного обслуговування, а покупець повинен сплатити вартість виїзду (виклику) фахівця, а в разі необхідності і вартість діагностування несправності.

ВІДМІТКИ ПРО ПРОВЕДЕННЯ СЕРВІСНОГО ОБСЛУГОВУВАННЯ

Дата прийому в ремонт	Заявлений споживачем недолік	№ наряду	Назва організації, СЦ	Перелік виконаних робіт	Перелік встановлених запчастин	Дата завершення ремонту	ПІБ та підпис майстра
							ПІБ та підпис споживача**

** Підпис споживача свідчить про приймання виробу в робочому стані.

ОТМЕТКИ ОБ УСТАНОВКЕ ИЗДЕЛИЯ*

Дата установки	Название организации, СЦ	№ наряда	ФИО и подпись мастера
			ФИО и подпись потребителя**

*Бытовые приборы, для ввода в эксплуатацию которых необходимы установочные, монтажные работы, должны вводиться в эксплуатацию уполномоченными специалистами сервисных центров поставщика. В случае возникновения несправности по причине некорректной установки, изделие может быть снято с гарантийного обслуживания, а покупатель должен оплатить стоимость выезда (вызова) специалиста, а в случае необходимости и стоимость диагностики неисправности.

ОТМЕТКИ О ПРОВЕДЕНИИ СЕРВИСНОГО ОБСЛУЖИВАНИЯ

Дата приема в ремонт	Заявленный потребителем недостаток	№ наряда	Название организации, СЦ	Перечень выполненных работ	Перечень установленных запчастей	Дата завершения ремонта	ФИО и подпись мастера
							ФИО и подпись потребителя**

** Подпись потребителя свидетельствует о приеме изделия в рабочем состоянии.

NOTES ABOUT THE INSTALLATION OF THE DEVICE*

Installation date	Name of organization, Service Center	Order No	Master's surname, name, patronymic and signature
			Client's surname, name, patronymic and signature**

* Household appliances for commissioning of which installation and mounting works are required should be commissioning by the supplier's authorized service center specialists. In the case of a malfunction of the product because of incorrect installation, the product may become invalid for warranty service, and the buyer must pay the cost of the visit (call) of the specialist, as well as the cost of fault diagnostics if necessary.

NOTES ABOUT CARRYING OUT OF SERVICE MAINTENANCE

Date of receipt for repair	Client's declared problem	Order No	Name of organization, SC	List of performed work	List of installed spare parts	The repair end date	Master's surname, name, patronymic and signature
							Client's surname, name, patronymic and signature**

** Client's signature certifies about the appliance's receipt at the working condition.

Saturn®

Model/ / /
 Date of sale/ / /
 Serial number/ / /
 Name of the Trade company and Stamp/ / /
 / Stamp
 Customer's address, phone#, name, surname/ / /
 /
 Date of Receiving/ / /
 Date of Return/ / /
 Defect / / /
 Stamp of the Service Center, signature/ / /
 / Stamp

COUPON 1

Saturn®

Model/ / /
 Date of sale/ / /
 Serial number/ / /
 Name of the Trade company and Stamp/ / /
 / Stamp
 Customer's address, phone#, name, surname/ / /
 /
 Date of Receiving/ / /
 Date of Return/ / /
 Defect / / /
 Stamp of the Service Center, signature/ / /
 / Stamp

COUPON 2

Saturn®

Model/ / /
 Date of sale/ / /
 Serial number/ / /
 Name of the Trade company and Stamp/ / /
 / Stamp
 Customer's address, phone#, name, surname/ / /
 /
 Date of Receiving/ / /
 Date of Return/ / /
 Defect / / /
 Stamp of the Service Center, signature/ / /
 / Stamp

COUPON 3