

# **Saturn<sup>®</sup>**

**ST-OH0411**

**OIL RADIATOR**



GB

## OIL-FILLED RADIATOR

Dear Buyer!  
 We congratulate you on having bought the device under trade name "Saturn". We are sure that our devices will become essential and reliable assistance in your housekeeping. Avoid extreme temperature changes. Rapid temperature change (e.g. when the unit is moved from freezing temperature to a warm room) may cause condensation inside the unit and a malfunction when it is switched on. In this case leave the unit at room temperature for at least 1.5

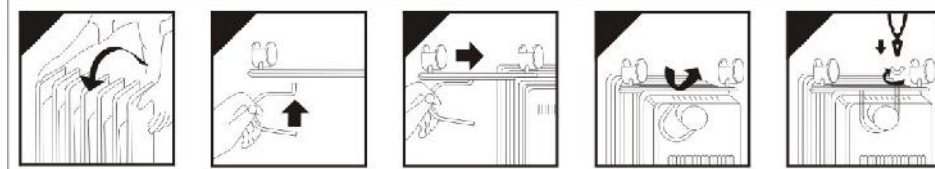
hours before switching it on. If the unit has been in transit, leave it indoors for at least 1.5 hours before starting operation.

**DO NOT TURN HEATER UPSIDE-DOWN DURING OPERATION.**

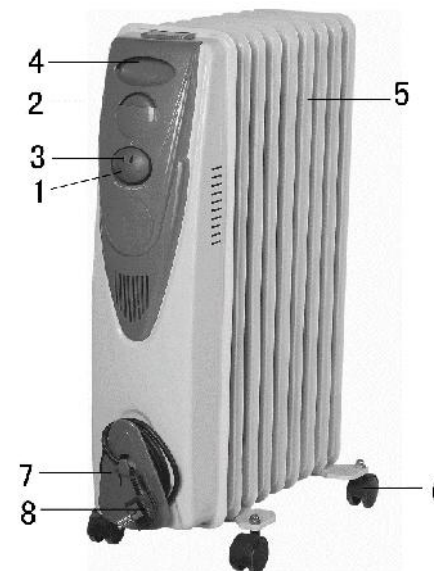
### ASSEMBLY

Remove the heater and all the accessories from the carton.

1. Turn the heater upside down.
2. Position the wheel base assemblies between the end fins.
3. Attach them to the heater using the U-bolts and wing nuts supplied.
4. Tighten the wing nuts.
5. Turn the heater the right way up.



### PARTS DESCRIPTION



1. Power switch
2. Thermostat knob
3. Indicator light
4. Handle
5. Oil filled fins
6. Castors
7. Cord storage
8. Power cord with plug

### IMPORTANT SAFEGUARDS

1. Read the instructions carefully before use and save them for future reference.
2. Always disconnect the heater from the main supply when not in use and when cleaning.
3. Do not leave the heater "ON" unattended.
4. Never cover the heater as this may lead to risk of fire.
5. Keep the heater a distance of at least 90 cm from any combustible material, such as furniture, curtains, bedding cloths or papers.
6. Keep the heater clean. Do not allow objects to enter the ventilation, as this may cause electric shock, fire or damage the heater.
7. Close supervision is required when any appliance is used near or by children.

8. Never allow the cord to touch wet or hot surfaces, become twisted or be within the reach of children.
9. Do not use outdoors.
10. Do not place on or near a hot gas or electric burner.
11. Never use the appliance with a damaged cord or plug or after the appliance has malfunctioned or been damaged in any way.
12. Never attempt to open any part or dismantle the controls. Responsibility for failure cannot be accepted if these instructions have been ignored.
13. Do not use the appliance for anything other than its intended use.
14. This appliance is intended for household use only.
15. Regulations concerning the disposal of the oil when scrapping the appliance have to be followed.
16. Any repairs that need to be done to the heater must be referred to an authorized service agent only.
17. The appliance is not intended for use by young children or infirm persons without supervision.
18. Young children should be supervised to ensure that they do not play with the appliance.
19. If the supply cord is damaged, it must be replaced by the manufacturer or its service agent in order to avoid a hazard.
20. The heater must not be located immediately below a socket-outlet.
21. Do not use this heater in the immediate surroundings of a bath, a shower or a swimming pool.
22. This heater is filled with a precise quantity of special oil. Repairs requiring opening of the oil container are only to be made by the manufacturer of his service agent who should be contacted if there is an oil leakage. Regulations concerning the disposal of the oil when scrapping the appliance have to be followed.
23. The appliance is not intended for use by persons (including children) with reduced physical, sensory or mental capabilities, or lack of experience and knowledge, unless they have been given supervision or instruction concerning use of the appliance by a person responsible for their safety

Service life – 5 years.

#### OPERATING THE OIL-FILLED RADIATOR

Place the heater on the floor at least 90 cm away from the wall and any other objects such as furniture, curtains or plants.

(Make sure the power supply used corresponds to the one on the rating label)

With the thermostat control switch and the power setting switches in the '0' position, plug the heater into the main power supply.

1. Room temperature can be adjusted using the thermostat simply. Turn the thermostat knob clockwise, to increase the heat, and anti-clockwise to decrease the temperature, until you reach the desired temperature.

2. Switch the heater to one of the following power settings.

a) Push switch one (I) 600W/800W/1000W/1000W

b) Push switch two (II) 900W/1200W/1500W/1500W

c) Push switches one and two heat settings together 1500W/ 2000W/ 2500W

3. The power switch lights up when activated.

4. Turning the thermostat control clockwise will increase the "set" temperature.

5. Turning the thermostat anti-clockwise will decrease the "set" temperature.

6. Do not cover the heater at any time during operation. There is a risk of fire if the heater is covered.

7. Once you have finished using your heater, turn the power switches, and the thermostat control switch to the "0" positions, and unplug from the mains supply.

#### CLEANING THE OIL-FILLED RADIATOR

1. Always disconnect the heater from the mains supply before cleaning.

2. Clean the outside of the heater by wiping with a damp cloth and buff with a dry cloth.

3. Do not use waxes or polishes as these may react with the heater and cause discoloration.

#### STORING THE OIL-FILLED RADIATOR

1. Save the box for off season storage.

2. Clean the heater following the cleaning instructions above.

3. Remove the wheel base assemblies.

4. Place the heater, and wheel assemblies in the original box, and store in a cool and dry place.

5. If you choose to store your heater fully assembled be sure to cover it to protect it from dust.

#### SPECIFICATIONS

Power:	1500 W	(		)
Rated voltage:	220-240 V			
Rated frequency:	50 Hz			
Rated current:	6.8 A			
7 fins				
Heating area:	up to 17 m <sup>2</sup>			
3 power settings:	600/900/1500W			

#### SET

OIL RADIATOR	1		
INSTRUCTION MANUAL WITH WARRANTY BOOK PACKAGE	1	1,5	
	1		

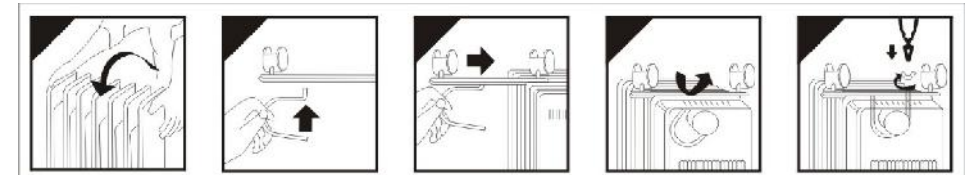
#### ENVIRONMENT FRIENDLY DISPOSAL



You can help protect the environment! Please remember to respect the local regulations: hand in the non-working electrical equipment to an appropriate waste disposal center.

The manufacturer reserves the right to change the specification and design of goods.

**RU**



1.

2.

5

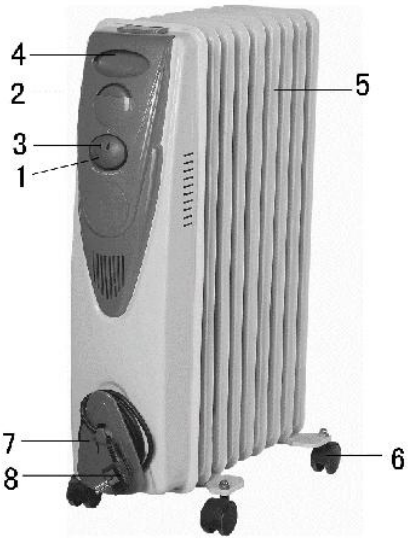
4

"Saturn".

3. U-

4.  
5.

1.  
2.  
3.  
4.  
5.  
6.  
7.  
8.



1.  
2.  
3.  
4.  
5.

90

6.  
7.  
8.  
9.  
10.  
11.  
12.  
13.  
14.  
15.  
16.  
17.  
18.  
19.  
20.  
21.  
22.

23.

( )

- 5

90

( )

«0».

1.

2.

a) (I) 600W/  
800W/1000W/1000W )  
(II)  
900W/1200W/1500W/1500W )  
1500W/ 2000W/ 2500W )

3.

4.

5.

6.

7.

"0"

1.

2.

3.

1.

2.

3.  
4.

5.

7

3

1500  
: 220-240  
50  
6.8  
17<sup>2</sup>  
: 600/900/1500

1

1

1

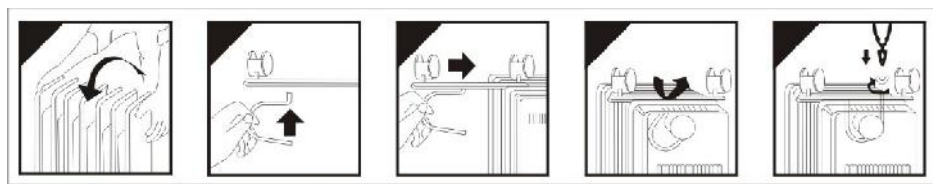




"Saturn".

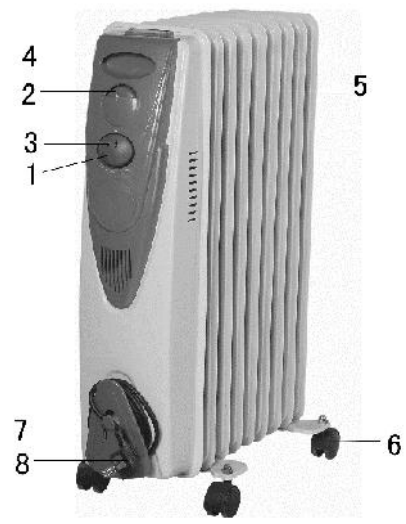
1,5

1,5



- 1.
- 2.
- 3.
- 4.
- 5.

U-



- 1.
- 2.
- 3.
- 4.
- 5.
- 6.
- 7.
- 8.

1.

2.

- 3.
- 4.
- 5.
- 6.
- 7.
- 8.
- 9.
- 10.
- 11.
- 12.
- 13.
- 14.
- 15.
- 16.
- 17.
- 18.
- 19.
- 20.
- 21.
- 22.

90

23.

- 5

90

«0».

1.

2.

a) 800W/1000W/1000W (I) 600W/  
 ) 900W/1200W/1500W/1500W (II)  
 ) 2000W/ 2500W 1500W/

- 3.
- 4.
- 5.
- 6.
- 7.
- 1.

"0"

- 2.
- 3.
- 1.
- 2.
- 3.
- 4.
- 5.

: 1500  
 : 220-240  
 : 50  
 : 6.8  
 : 17<sup>2</sup>  
 : 600/900/1500

- 1
- 1
- 1



# Saturn<sup>®</sup>

## INTERNATIONAL MANUFACTURER'S WARRANTY

,

## MEZINÁRODNÍ ZÁRUKA

## INTERNATIONAL MANUFACTURER'S WARRANTY

The Warranty is provided for the period of 2 years or more if the Law on User Right of the country where the appliance was bought provides for a greater minimum warranty period.

All terms of warranty comply with to the Law on Protection of the Consumer Rights and are governed by the legislation of the country where the product was bought. The warranty and free of charge repair are provided in any country where the product is delivered to by Saturn Home Appliances or authorized representative thereof, and where no restriction of import or other legal provisions interfere with rendering of warranty services and free of charge repair.

Cases uncovered by the warranty and free of charge repair:

1. Guarantee coupon is filled in improperly.
2. The product has become inoperable because of the Buyer's nonobservance of the service regulations indicated in the instruction.
3. The product was used for professional, commercial or industrial purposes (except for the models, specially intended for this purpose that is indicated in the instruction).
4. The product has external mechanical damage or damage caused by penetration of the liquid inside, dust, insects and other foreign objects.
5. The product has damages caused by non-observance of the rules of power supply from batteries, mains or accumulators.
6. The product was exposed to opening, repair or modification of design by the persons, unauthorized to repair; independent cleaning of internal mechanisms etc. was made.
7. The product has natural wear of parts with limited service life, expendables etc.
8. The product has deposits of scale inside or outside of fire-bar elements, irrespective of used water quality.
9. The product has damages caused by effect of high (low) temperatures or fire on non-heat resistant parts of the product.
10. The product has damages of accessories and nozzles which are included into the complete set of product shipment (filters, grids, bags, flasks, cups, covers, knives, sealing rings, graters, disks, plates, tubes, hoses, brushes, and also power cords, headphone cords etc.).
11. A defect was a result of inappropriate installing of the appliance by non-specialists of the supplier's authorized service center.

On the warranty service and repair, please contact the authorized service centers of "Saturn Home Appliances".

## MEZI NÁRODNÍ ZÁRUKA

Záruka se poskytuje na dobu 2 roky. V případě že Zákon na ochranu spotřebitele dané země stanoví delší dobu, prodlužuje se záruka na tuto dobu.

Veškeré záruční podmínky odpovídají Zákonu o ochraně práv uživatelů a jsou řízené zákonodárstvím státu, kde byl výrobek koupen. Záruka a bezplatná oprava se poskytují v každém státě, kam jsou výrobky dodané společností „Saturn Home Appliances“ nebo jejím zplnomocněným zástupcem a kde nejsou žádná omezení na dovoz nebo jiné právní předpisy omezující poskytnutí záručního servisu a bezplatné opravy.

Případy, na které se záruka a bezplatná oprava nevztahují

1. Záruční list je vyplněn nesprávně.
2. Výrobek byl poškozen kvůli tomu, že zákazník nesplnil pravidla použití, která jsou uvedena v návodu.
3. Výrobek byl používán k profesionálním, komerčním nebo průmyslovým účelům (kromě modelů speciálně určených pro tyto účely, což je uvedeno v návodu).
4. Výrobek má vnější mechanická poškození nebo poškození, vyvolaná tím, že se dovnitř dostala tekutina, prach, hmyz a jiné cizí předměty.
5. Výrobek má poškození, která jsou vyvolaná nesplněním pravidel napájení od baterií, sítě nebo akumulátorů.
6. Výrobek rozebírali, opravovali nebo měnili jeho konstrukci lidé, kteří nebyli zplnomocněni k opravě, bylo provedeno samostatné čištění vnitřních mechanismů a podobně.
7. Výrobek má přirozené opotřebení dílů s omezenou dobou použití, spotřebních materiálů atd.
8. Výrobek má vrstvu usazeniny uvnitř nebo zvenku termoelektrických ohřevů, bez ohledu na kvalitu používané vody.
9. Výrobek má poškození, která jsou vyvolaná působením vysokých (nízkých) teplot nebo ohněm na termonestabilní části výrobku.
10. Výrobek má poškození přístrojem a nástavce, které jsou dodané spolu s výrobkem (filtry, síky, sáčky, mýty, víka, nože, šlehače, struhadla, kotouče, talíře, trubky, hadice, kartáče a také síťové šňůry, sluchátkové šňůry atd.).
11. Vada je důsledkem nesprávné instalace výrobku neoprávněnou osobou.

V otázkách záručního servisu a oprav se obraťte na autorizovanou servisní středisko společnosti „Saturn Home Appliances“.

«Saturn Home Appliances»

- 1.
- 2.
- 3.
- 4.
- 5.
- 6.
- 7.
- 8.
- 9.
- 10.
- 11.

« Saturn Home Appliances» .

: <http://saturn.ua/ru/servis>,  
 : 0-800 505-27-09

					LCD	
, 4	« »	8(988) 993-37-78	+		+	+
, 18		8(8553) 32-22-11 8(960) 047-22-11	+	+	+	+
, 109	-	8(86152) 2-81-99	+	+	+	+
12, 1, . 1,	« -29»	8(8182) 44-15-55	+			
, 47	« »	8(8512) 25-19-39 8(8512) 25-12-00	+	+	+	
, 54	« »	8(8512)50-19-97	+		+	
.77, 16, 2	« »	8(8512)54-67-67 8(8512)54-91-91			+	+
, 15	« »	8(85141) 3-61-25	+	+	+	+
, 8	« »	8(927) 565-11-56	+	+	+	+
, 32		8(927) 552-47-21 8(937) 122-13-99				+
, 4	« - »	8(39151) 5-90-94 8(983) 158-21-94	+			+
, 113	« »	8(3852) 63-94-02	+		+	+
, .114	« »	8(3852) 20-25-52 8(3852) 69-60-09		+		+
, 9, .25		8(905) 425-604-73	+	+	+	
, 37		8(8635) 47-47-72 8(8635) 47-47-72	+	+	+	+
, 79, 2	« - »	8(980) 521-76-16	+			
, 63	« »	8(86155) 3-11-00 8(918) 980-64-75	+	+	+	+
, 63	«Radmond»	8(4162) 21-00-88 8(4162) 54-01-23	+			
, 36	« »	8(4832) 68-71-75	+	+	+	+
, 3	« »	8(4832) 63-06-00 8(4832) 33-15-61		+		
, 18	« »	8(3535) 23-23-98 8(922) 802-21-58	+	+	+	+



, 84		8(86559) 2-08-02 8(86559) 5-29-71	+	+	+	+	+
, 1		8(928) 92-00-497 8(86559) 2-07-17					+
, 136/4	-ise	8(964) 013-00-59	+	+	+	+	+
, 39	« »	8(4922) 44-72-80 8(4922) 44-72-81	+	+	+	+	+
, 173	« »	8(8442) 97-50-10 8(960) 883-59-00		+			
, 4		8(8442) 98-16-47 8(8442) 53-06-04	+	+	+	+	+
, 11	« - »	8(8442) 37-16-74 8(8442) 37-69-03		+			
	« »	8(961) 688-53-48		+			
, 9		8(927) 521-52-00		+		+	+
, 32		8(937) 722-68-12				+	+
, 158		8(937) 730-66-03		+		+	+
		8(904) 404-14-55				+	+
12/15	«Master»	8(928) 126-63-66	+		+		
, 110	«X »	8(961) 41-001-71 8(918) 500-54-99	+	+	+	+	+
, 1	« »	8(8172) 52-72-51	+		+		
, 46	« »	8(473) 260-09-08 8(473) 240-57-73	+		+	+	
, 12-15	« »	8(920) 436-08-52 8(960) 131-17-99		+			
, 13	« »	8(38822) 6-23-32	+		+	+	+
, 48	« »	8-962-655-20-00	+	+	+	+	+
, 308		8-962-753-67-67	+				
, 17	« »	8(8712) 22-49-21 8(928) 001-33-03	+	+	+	+	+
, 68	« »	8(8313) 21-14-14	+		+		
, 54	« »	8(8313) 20-56-00	+	+	+	+	

, 63	« »	8(84235) 2-86-59 8(84235) 9-14-64	+		+	+	+
, 84	« »	8(86132) 2-11-71 8(86132) 3-66-02	+	+	+	+	+
, 55	« »	8(86132)5-05-00	+	+		+	+
, 81, 3	« »	8(343) 361-11-77 8(343) 361-11-78	+		+	+	+
, 64	« »	8(343) 240-26-60	+		+		
201	«GOLD»	8(919) 372-28-04		+			+
, 31, .2	« - »	8(343) 385-12-89	+	+	+	+	+
, 47	« »	8(47467) 4-12-08 8(47467) 4-33-17	+		+		
, 22		8(86359) 4-32-23 8(86359) 4-06-42		+			
, 45/6	« - »	8(4932) 335185 8(4932) 335236	+	+	+	+	+
« » 7 ( « »)	« 26»	8(86545) 2-74-74		+			
, 4	« - »	8(3412) 30-79-79 8(3412) 30-83-07	+		+	+	+
, 76	« - »	8(3412) 78-76-85 8(3412) 78-06-64	+		+	+	+
301, 307	« - »	8(3412) 44-60-40 8(3412) 44-60-67		+			
, 24	« »	8(8362) 24-11-24 8(8362) 25-55-40	+	+	+	+	
, 24	« »	8(3952) 42-55-76 8(3952) 78-15-83	+		+	+	
, 56	« »	8(3952) 28-74-50 8(3952) 76-71-75		+		+	+
, 183	« - »	8(34551) 7-46-31					+
, 9	«VIP-SERVIS»	8(843) 258-92-15	+		+	+	
100, .45	« »	8(843) 240-64-94	+	+	+	+	+
, .163	«1000 »	8(4012) 58-83-54 8(4012) 76-04-77	+		+		
, 33		8(3439) 39-95-20 8(34399) 34-74-40	+	+	+	+	+

, 6	« »	8(84457) 9-17-43 8(84457) 9-45-89	+	+	+	+	+
, 157		8(8734) 44-42-44	+	+		+	+
, 53/2	-	8(3842) 35-39-67	+			+	
17	« »	8(87239) 2-33-55 8(87239) 3-01-77	+	+	+	+	+
, 42	« - »	8(8332) 56-25-95 8(8332) 54-70-77	+		+	+	
, 96	« »	8(86393) 2-10-43		+			
, 9	-	8(988) 548-24-36	+		+		
, 2,		8(86142) 4-43-59	+	+	+	+	+
, 1	« »	8(918) 936-36-53		+		+	+
, 3	« - »	8(861) 267-50-88	+	+	+	+	+
103, .55	« - - »	8(861) 222-64-13 8(861) 222-85-55 8(905) 408-08-38	+	+	+	+	+
, 16		8(861) 235-49-68	+	+	+	+	+
, 1\1	« - »	8(918) 102-00-10 8(961) 501-92-22	+	+	+	+	+
, 106	« »	8(86156) 3-40-40 8(918) 990-35-04	+		+	+	
, 116		8(86164) 7-01-22		+			
, 57	« »	8(86145) 3-78-74		+			+
, 25	« »	8(86164) 65-4-95 8(918) 355-81-70	+	+		+	+
, 1		8(86153) 4-16-70		+			
, 242, .1		8(86 151) 4-10-92	+	+	+	+	+
, 6	« »	8(3912) 92-92-22 8(3912) 41-78-88	+	+	+	+	+
, 1	« »	8(3912) 93-54-33 8(3912) 94-52-82	+	+	+	+	+

, 36- , .	« +»	8(4712) 50-85-90 8(4712) 35-04-91	+	+	+	+
, 37-						
, 5	« »	8(4712) 51-45-75	+	+	+	+
, 17	« »	8(4712) 54-74-24	+	+	+	+
, 2	« »	8(86169) 7-39-99 8(86169) 7-24-96	+	+	+	+
, 66	« »	8(4742) 33-45-65 8(4742) 33-45-95	+	+	+	+
, 25	« - »	8(8772) 55-62-38		+		+
, 164	« »	8( 8722) 93-30-73	+	+	+	+
14- , 21	« -ise»	8(8722) 63-23-94 8(8722) 93-55-15	+	+	+	+
, 11	« »	8(86385) 2-33-26 8(960) 458-07-11	+	+		+
, 9	«X »	8(909) 401-35-21	+	+	+	+
, 3 ( . . . )	« »	8(495) 721-30-70 8(499) 168-05-19 8(499) 168-47-15	+		+	+
, 20 (30/05)	« »	8(8552) 359002 8(8522) 359042	+	+	+	+
, 154 (52/28)	«VIP-SERVIS»	8(8552) 99-91-45	+	+	+	+
, 24	« - »	8(8662) 42-04-30 8(8662) 42-12-21	+		+	+
, 55	« »	8(86554) 5-59-77 8(86554) 3-67-57	+	+	+	+
, 10	« - »	8(34783) 3-43-44	+	+	+	+
, 9 ( . . . « »)	« »	8(8555) 48-08-80 8(917) 906-60-06	+		+	+
, 51	« - »	8 (831) 220-84-94 8 (831) 413-82-91	+		+	
, 18	« - »	8(831) 46-18-848		+		+
, 6		8(831) 46-18-848		+		+
, 18	« »	8(3843) 20-31-33	+		+	+

21/27	« »	8(48762) 6-46-46	+	+	+	+	+
14	« »	8(8617) 63-11-15 8(8617) 63-03-95	+		+	+	
17	« - »	8(383)274-99-33 8(383) 274-99-45	+		+		
63, 3	« »	8(383) 210-59-49 8(383) 210-52-92	+		+	+	
2	« »	8(383) 351-39-19	+		+		
24	« »	8(86369) 3-74-75 8(928) 609-35-85	+	+	+		
4		8(3532) 36-87-94	+			+	+
5-1	« - »	8(3812) 577-092 8(3812) 576-329	+		+		
194	« »	8(3812) 36-74-01					+
130	« »	8(3812) 36-42-02	+	+	+	+	
25	« - +»	8(3537) 37-23-83	+	+	+	+	+
11	« - »	8(3537) 35-79-93 8(3537) 20-60-70	+	+	+	+	+
11-	« - »	8(3537) 35-79-93 8(987) 796-00-19	+	+	+	+	+
3,	« - »	8(342) 221-40-99	+	+	+	+	+
19, 1	« - »	8(342) 240-88-88 8(342) 205-57-88	+	+	+	+	+
11	« »	8(342) 240-93-35 8(342) 240-93-24		+			
11	« - »	8(8142) 78-06-93 8(8142) 70-65-48	+		+		
39-5		8(3846) 69-33-00	+	+	+	+	+
11	« »	8 (8112)-53-86-30 8 (8112)-53-86-50	+		+		+
5-13		8(8793) 98-70-11 8-918-743-69-46	+	+	+	+	+
50-		8(47396) 48-911	+	+	+	+	+
18		8(47396) 47-676	+	+	+	+	+
1	« »	8(863) 250-47-77	+		+		
37	« »	8(863) 227-60-90 8(863) 299-00-50	+	+	+	+	+
7	« - »		+	+	+	+	+

55	50-1/52,	« »	8(863) 21-92-112 8(800) 100-51-52	+	+	+	+	+
/17-	11-		8(906) 453-35-81	+		+		
14		« »	8(86370) 2-19-50	+	+	+	+	+
12		« »	8(4855) 22-04-77 8(4855) 25-38-60	+	+	+	+	+
21		« »	8(4855) 24-31-21	+	+	+	+	+
14, 1		« - »	8(4912) 76-88-01 8(4912) 40-30-30	+	+	+	+	+
42-		« - »	8(4912) 41-33-02	+	+	+	+	+
100/56		« - »	8(846) 990-37-51 8(846) 240-98-17	+	+	+	+	+
149		« - - »	(846) 979-9-979	+	+	+	+	+
e 197		XXI»	8(812) 600-11-97	+	+	+	+	
e 41-		« - »	8(812) 325-36-56 8(812) 325-36-57	+		+	+	
e 11, 36-		« -95»	8(812) 822-18-00 8(812) 320-06-61	+				
1		« - »	8(8342) 23-05-91 8(8342) 47-48-59	+	+	+		
95		« - »	8(8452) 52-81-21 8(8452) 52-83-84	+	+	+	+	+
253-		« »	8(496) 547-04-95 8(496) 549-32-79	+	+		+	+
47		« -S»	8(963) 624-49-46			+	+	+
44		« »	8(4812) 45-05-13 8(920) 333-09-44	+	+	+	+	+
90		« »	8(8622) 55-51-19 8(8622) 55-01-08	+			+	+
63		« »	8(8652) 24-30-14 8(8652) 23-31-81	+	+	+	+	+
15-, 21		« »	8(8652) 95-53-68 8(8652) 95-61-90		+			
3/4		« »	8(8652) 44-88-66		+			

, 1	« - »	8(4725) 24-62-27 8(4725) 24-73-49	+	+	+			
, 158	« - »	8(3473) 20-12-13 8(3473) 20-27-70	+		+	+	+	
, 25	« »	8(8212) 22-95-29 8(8212) 29-12-20	+	+	+	+	+	
, 137-	« -2000»	8(4752) 56-19-42 8(4752) 56-19-44	+	+	+	+	+	
, 18	« »	8(4822) 47-65-65 8(4822) 47-58-58	+	+	+	+	+	
, 24/2		8(86130) 4-86-59 8(918)147-02-03	+	+			+	+
, 2/2	« - »	8(86196) 7-20-53	+	+	+	+	+	
, 48	« +»	8(8482) 22-72-41 8(8482) 22-71-85 8(8482) 61-65-64	+	+	+	+	+	
, 115	« »	8(910) 949-68-44 8(953) 182-61-82	+	+	+	+	+	
, 169/5	« »	8(3452) 75-95-08 8(3452) 20-82-65	+			+	+	
, 24	« »	8(9292) 69-56-60; 60-56-60-	+	+	+	+	+	
, 55	« »	8(3452) 47-35-69	+			+	+	
, 28	« »	8(3012) 21-89-63	+			+	+	
, 16/7	« »	8(8422) 73-44-22 8(8422) 73-29-19	+	+			+	+
, 6/1	« - »	8(347) 236-57-07	+			+		
, 59	« - »	(347) 2281701	+			+	+	
, 153; , 42	« »	8(347) 279-90-70 8(347) 241-62-02						+
, 70-	« -ise»	8(928) 048-93-10	+	+	+	+	+	
, 15-	« »	8(86391) 2-18-06	+			+		
, 36	« »	8(8352) 62-30-97 8(4942) 63-20-98	+			+		
, 8		8(351) 239-39-34 8(351) 239-39-35	+	+	+	+	+	
, 57 , . 3	« »	8(351) 225-13-13 8(351) 236-12-40	+			+	+	

, 340-	« - »	8(8782) 27-30-60 8(8782) 27-70-77	+	+	+	+	+	
, 48, . 11	« . »	8(8782) 25-04-66 8(8782) 25-19-15	+	+	+	+	+	
, 13	« - »	8(8782) 23-91-26 8(928) 385-22-42	+	+	+	+	+	
, 33	« »	8(3022) 36-39-36 8(3022) 36-39-32	+	+	+	+	+	
, 1		8(904) 345-83-18	+	+	+	+	+	
3- , 21-	« »	8(84722) 9-52-07 8(937) 469-52-07	+	+	+	+	+	
, 57	« - »	8(8453) 55-80-89 8(964) 848-45-06	+			+	+	
, 12	« - »	8(4852) 25-94-83	+			+		

«Saturn Home Appliances»

- 1.
- 2.
- 3.
- 4.
- 5.
- 6.
- 7.
- 8.
- 9.
- 10.
- 11.

« Saturn Home Appliances» .

: <http://saturn.ua>,  
 :  
 0-800 502-502

, 36	Hi-Fi ( )	(06442) 9-11-37 (099) 052-10-01	+	+	+	+	+	-	+	
. 50- , 82	-	(04563) 6-84-13	+	+	+	+	+	-	+	
, 57	« - »	(04143) 4-06-36	+	+	+	-	+	+	+	
43	« »	(03141) 4-34-32	+	+	+	+	-	-	-	
. 50 , 51		(0432) 69-95-73	+	+	+	+	+	+	+	
, 3		(0432) 64-24-57 (0432) 64-26-22	-	+	+	-	-	-	-	
, 1		(0432) 50-91-91 (0432) 57-91-91 (066) 350-91-91 (096) 050-91-91	+	+	+	+	+	-	+	
- , 16	« » -	(0432) 46-43-93 (0432) 46-82-13 (0432) 51-92-54	+	+	+	+	+	+	+	
, 59		(0562) 35-04-09 (0562) 34-67-05	+	+	+	+	+	-	+	
, 6	-	(056) 735-63-28 (056) 735-63-25	+	+	+	+	+	-	+	
, 41- , -		(056) 790-04-60	+	+	+	+	+	-	+	
, 24	C ( )	(0412) 47-07-42	-	-	+	+	+	-	-	
, 8	( « »)	(0412) 47-15-68 (067) 411-58-12	+	+	+	-	-	-	+	
, 4, 222		(0412) 482425, 067-4102198	+	+	+	+	+	+	+	
, 175		(061) 787-50-51 (0612) 63-97-90	+	+	+	+	+	+	+	
, 83		(0612) 12-03-03	+	+	+	+	-	-	+	
- , 223		(0342) 75-60-40 (0342) 71 28 13	+	+	+	+	+	-	-	
- , 19-		(0342) 55-95-25 (0342) 75-07-77	+	+	+	+	-	-	-	
, 2	« - »	(067) 324-82-18	+	+	+	+	+	+	+	

, 76	« »	(04597) 5-73-93	+	+	+	-	-	-	-
, 161	« »	(067) 324-84-01 (067) 324-83-65 (04736) 6-29-49	+	+	+	+	+	+	+
, 16	« »	(044) 426-91-98 (044) 362 91 98	+	+	-	-	-	-	+
, 1-	« »	(044) 591-11-90	+	+	+	+	+	+	+
, 2		(0522) 35-79-23 (0522) 27-80-02 (0522) 27-33-00	+	+	+	+	+	-	+
, 1-	( )	(0522) 27-28-40 (0522) 27-76-67	+	+	+	+	+	+	+
, 13		(097) 776-67-70 (097) 264-21-67	+	+	+	+	+	+	+
, 10	( )	(06272) 2-62-23 (06272) 2-21-86 (050) 279-68-16	+	+	+	-	-	-	-
, 2-	« »	(04142) 5-05-04	-	+	+	+	+	+	+
, 7		(050) 526-06-68	+	+	+	+	+	+	+
, 3		(06264) 5-93-89	+	+	+	+	-	+	-
, 20, 8	-	(050) 973-20-14	+	+	+	+	+	-	+
, 5-		(0626) 41-21-34 (067) 255-79-90	+	+	+	+	+	+	+
, 19, 67		(050) 473-56-12	+	+	+	+	+	+	+
, 44, 2		(05366) 3-91-92	+	+	+	+	+	+	+
, 64/7		(056) 440-07-79	+	+	+	+	+	-	+
, 81		(050)214-91-73 (066) 017-02-03	+	+	+	+	+	+	+
, 96-	« »	(0642) 33-02-42 (0642) 33-11-86 (095) 386-89-85	+	+	+	+	+	+	+
, 49-	« »	(0642) 506000	+	+	+	+	+	+	+
, 1	« »	(0332)-290752	+	+	+	-	-	-	+
, 28	« »	(032) 239-51-52 (032) 239-55-77 (032) 295-50-28 (032) 2955029	+	+	+	+	+	+	+
, 109		(032) 222-87-10	+	+	+	-	-	+	+

, 242		(0623) 22-55-50 (066) 103-22-88 (097) 776-81-20	+	+	+	-	-	-	-
, 1		(0623) 41-37-58	+	+	+	+	+	+	+
, 50-32\18		(0629) 49-60-05 (0629) 49-30-06	+	+	+	+	+	-	+
, 227	( « » )	(0629) 47-30-00 (098) 312-26-28 (095) 028-26-28	+	+	+	+	+	-	+
, 84		(0629) 49-18-81 (067) 597-56-15	+	+	+	+	+	-	+
, 51-	-	(04337) 6-48-47 (0432) 46-82-13	+	+	+	+	+	+	+
, 46		(03131) 3-73-37 (03131) 3-73-36 (099) 797-44-30 (097) 342-35-51	+	+	+	-	+	+	-
, 33	« »	(0512) 47-04-96 (0512) 47-83-48	+	+	+	+	+	+	+
, 2		(0512) 58-06-47	+	+	+	+	+	+	-
, 49	« »	(0512) 58-21-80 (067) 517-05-70 (066) 705-64-44	-	+	+	+	+	+	-
, 97, 2	« » ( )	(05662) 4-15-03 (099) 074-35-53	+	+	+	+	+	+	+
, 38		(095) 724-72-66	+	+	+	+	+	+	-
, 38	« »	(04141) 5-20-10	+	+	+	+	+	-	+
, 90		(048) 700-17-37 (048) 787-45-79	+	+	+	+	+	+	+
, 55		(0482) 39-06-18 (094) 839-06-19	+	+	+	+	+	-	+
, 2 ( , 66)		(048) 731-77-03 (048) 731-77-04	+	+	+	-	-	-	+
, 172-		(05632) 6-15-54 (05632) 6-23-42	+	+	+	+	+	-	+
, 75		(096) 284-08-36 (066) 085-75-39	+	+	+	+	+	+	+
, 29		(0532) 69-42-62 (099) 60-14-24	+	+	+	+	+	+	+
, 120		(0532) 50-98-89 (050) 013-72-17	+	+	+	+	+	-	+
, 66		(0532) 61-56-21	+	+	+	+	+	+	+

, 101/1		(04637) 3-85-95 (095) 886-21-99 (063) 597-41-27 (067) 272-57-51	-	+	+	+	+	+	+	+
, 12		(0362) 26-65-85	+	+	+	+	+	-	+	
, 5		(0362) 43-33-40 (067) 360-42-42	+	+	+	+	+	+	+	+
, 1	-	(06434) 2-60-25 (099) 271-01-47	+	+	+	+	+	+	+	+
, 24		(06452) 5-05-33 (050) 603-72-72	+	+	+	+	+	+	+	+
, 32	-	(04733)-46182	+	+	+	+	+	+	+	+
, 1	-	(06444) 4-02-89 (066) 105-39-66	+	+	+	+	+	-	+	
, 171- \10		(03245)-58381	+	+	+	-	-	-	-	
, 19		(096) 340-06-96	+	+	+	+	+	+	+	+
86/1		(0542) 660-300, 650-340, 655-510								
, 2	« »	(067) 357-63-78 (050) 512-48-87	+	+	+	+	+	+	+	+
1/24	« - »	(04744) 4-66-14 (04744) 4-61-34	+	+	+	-	-	-	-	
, 3/2		(0312) 65-42-66 (099) 557-53-07	+	+	+	+	+	+	+	+
, 3	« »	(057) 734-97-24 (057) 712-51-81	+	+	+	+	-	+	-	
, 12		(057) 717-13-39 (057) 702-16-20	+	+	+	+	+	+	+	+
( , 42 ) <sup>18,</sup>	« »	(096) 595-37-46	+	+	+	-	-	+	+	
, 35		(0552) 42-02-35	-	-	-	+	-	-	-	
, 28-		(0552) 43-40-40 (050) 494-60-43	+	+	+	+	+	+	+	+
, 23		(0552) 29-60-42	+	+	+	+	+	+	+	+
, 7	-	(0382) 66-45-01 (063) 075-08-89	+	+	+	-	-	+	+	
, 2		(0382) 70-47-00 (0382) 70-47-07 (03822) 66-46-16	+	+	+	+	+	-	-	
, 18		(0382) 78-37-73 (0382) 78-37-55	+	+	+	+	+	+	+	+

, 146, 102	« - »	(0472) 56-34-78 (0472) 50-03-54 (0472) 56-42-16 (096) 505-63-63	+	+	+	+	+	+	+	+
, 71	« »	(0472) 31-46-57 (0472) 56-56-21	+	+	+	-	-	-	+	
, 77- , 1	« »	(0462)-601585	+	+	+	+	+	-	-	
, 105		(0372) 55-48-69 (050) 434-55-29	+	+	+	-	+	+	+	
, 3		(03840) 4-00-17 (067) 360-16-32	+	+	+	+	+	+	+	+

GB

WARRANTY COUPON

When purchasing the product,  
please require its checking before you;

BE SURE

that the goods sold to you, are functional and complete  
and that the warranty coupon is filled in correctly.

This warranty coupon confirms the absence of any defects in the product you purchased and provides for free of charge repair of the product failed through the fault of the manufacturer throughout the period of warranty service and free of charge repair.

Failing the presentation of this coupon, in case of its improper filling in, infringement of factory seals (if any), and also in cases indicated in the warranty obligations, the claims are not accepted, and no warranty service and free of charge repair is made!

The warranty coupon is valid only in the original copy with the stamp of trading organization, signature of the seller, date of sale and signature of the buyer.

Complex home appliances should be installed by supplier's authorized service centers, authorized specialists. In the case of a malfunction of the home appliance because of incorrect installation, the buyer must pay the cost of the visit (call) of the specialist, as well as the cost of fault diagnostics if necessary.

RU

CZ

ZÁRUČNÍ LIST

Při koupi výrobku  
žádejte o jeho vyzkoušení ve Vaší přítomnosti,

PĚSVDTESE

že Vám prodaný výrobek je dobře fungující a kompletní  
a že záruční list je vyplněn správně.

Tento záruční list potvrzuje, že na Vámi koupeném výrobku nejsou žádné vady a zajišťuje bezplatnou opravu nefungujícího přístroje z viny výrobce, během celé záruční doby.

Bez předložení tohoto listu, při jeho nesprávném vyplnění, porušení plomb výrobce (jsou-li na výrobku) a také v případech, které jsou uvedené v záručním listě, nároky se nepřijímají a záruční oprava se neprovádí!

Záruční list je platný jenom jako originál s razítkem obchodní organizace, podpisem prodávajícího, termínem prodeje a podpisem zákazníka.

Instalace komplexní spotřebiče musí být provedena autorizovaným servisním specialistou. V případě poruchy v důsledku nesprávné instalace výrobku, kupující je povinen uhradit náklady na výjezd (volání) odborný, pokud je to nezbytné, a náklady na diagnostiku poruch.

UA



# Saturn®

WARRANTY COUPON

ZÁRU NÍ LIST

SATURN HOME APPLIANCES S.R.O. KON VOVA 141, 13083  
PRAHA 3 – ŽIŽKOV, ESÁ REPUBLIKA, TEL: + 4202/ 67 108 392

Model/

Serial number/Sériové číslo/

Date of sell/Termín prodeje/

Shop stamp/Razítko obchodu/

Seller's signature/Podpis prodava e/

Buyer's Signature confirming the acquaintance and consent with terms of free of charge maintenance service of the product, and absence of the complaints on appearance and color of the product. Podpis zákazníka, potvrzující seznámení a souhlas s podmínkami bezplatného záru ního servisu výrobku, a také neexistence nárok na vn jšek a barvu výrobku.

32

## ВІДМІТКИ ПРО ВСТАНОВЛЕННЯ ВИРОБУ\*

Дата встановлення	Назва організації, СЦ	№ наряду	ПІБ та підпис майстра	
			ПІБ та підпис споживача**	

\*Побутові прилади, для введення в експлуатацію котрих необхідні установочні, монтажні роботи, повинні вводитись в експлуатацію уповноваженими спеціалістами сервісних центрів постачальника. В разі виникнення несправності виробу з причини некоректної установки вироб може бути знятий з гарантійного обслуговування, а покупець повинен сплатити вартість виїзду (виклику) фахівця, а в разі необхідності і вартість діагностування несправності.

## ВІДМІТКИ ПРО ПРОВЕДЕННЯ СЕРВІСНОГО ОБСЛУГОВУВАННЯ

Дата прийому в ремонт	Заявлений споживачем недолік	№ наряду	Назва організації, СЦ	Перелік виконаних робіт	Перелік встановлених запчастин	Дата завершення ремонту	ПІБ та підпис майстра	
							ПІБ та підпис споживача**	

\*\* Підпис споживача свідчить про приймання виробу в робочому стані.

33

**ОТМЕТКИ ОБ УСТАНОВКЕ ИЗДЕЛИЯ\***

Дата установки	Название организации, СЦ	№ наряда	ФИО и подпись мастера
			ФИО и подпись потребителя**

\*Бытовые приборы, для ввода в эксплуатацию которых необходимы установочные, монтажные работы, должны вводиться в эксплуатацию уполномоченными специалистами сервисных центров поставщика. В случае возникновения неисправности по причине некорректной установки, изделие может быть снято с гарантийного обслуживания, а покупатель должен оплатить стоимость вызова (вызова) специалиста, а в случае необходимости и стоимость диагностики неисправности.

**ОТМЕТКИ О ПРОВЕДЕНИИ СЕРВИСНОГО ОБСЛУЖИВАНИЯ**

Дата приема в ремонт	Заявленный потребителем недостаток	№ наряда	Название организации, СЦ	Перечень выполненных работ	Перечень установленных запчастей	Дата завершения ремонта	ФИО и подпись мастера
							ФИО и подпись потребителя**

\*\* Подпись потребителя свидетельствует о приеме изделия в рабочем состоянии.

**NOTES ABOUT THE INSTALLATION OF THE DEVICE\***

Installation date	Name of organization, Service Center	Order No	Master's surname, name, patronymic and signature
			Client's surname, name, patronymic and signature**

\* Household appliances for commissioning of which installation and mounting works are required should be commissioning by the supplier's authorized service center specialists. In the case of a malfunction of the product because of incorrect installation, the product may become invalid for warranty service, and the buyer must pay the cost of the visit (call) of the specialist, as well as the cost of fault diagnostics if necessary.

**NOTES ABOUT CARRYING OUT OF SERVICE MAINTENANCE**

Date of receipt for repair	Client's declared problem	Order No	Name of organization, SC	List of performed work	List of installed spare parts	The repair end date	Master's surname, name, patronymic and signature
							Client's surname, name, patronymic and signature**

\*\* Client's signature certifies about the appliance's receipt at the working condition.

<b>Saturn</b>	<b>Saturn</b>	<b>Saturn</b>
Model/ / .....	Model/ / .....	Model/ / .....
Date of sale/ / .....	Date of sale/ / .....	Date of sale/ / .....
Serial number/ / .....	Serial number/ / .....	Serial number/ / .....
Name of the Trade company and Stamp/ / .....	Name of the Trade company and Stamp/ / .....	Name of the Trade company and Stamp/ / .....
... / Stamp	... / Stamp	... / Stamp
Customer's address, phone#, name, surname/ / , , , ,	Customer's address, phone#, name, surname/ / , , , ,	Customer's address, phone#, name, surname/ / , , , ,
Date of Receiving/ / .....	Date of Receiving/ / .....	Date of Receiving/ / .....
Date of Return/ / .....	Date of Return/ / .....	Date of Return/ / .....
Defect / / .....	Defect / / .....	Defect / / .....
Stamp of the Service Center, signature/ / , ,	Stamp of the Service Center, signature/ / , ,	Stamp of the Service Center, signature/ / , ,
... / Stamp	... / Stamp	... / Stamp
COUPON 1	COUPON 2	COUPON 3